



Peter Barry
working harder for you

946 Green Lanes
Winchmore Hill
London N21 2AD

Tel: 020 8360 4777
Fax: 020 8245 4580
info@peterbarry.co.uk
www.peterbarry.co.uk

3 2 1 90 feet Garage 0.3 Miles

Road: Green Dragon Lane

Area: Winchmore Hill N21

Price:

Tenure: Freehold



Road: Green Dragon Lane

Area: Winchmore Hill N21

Price:

Tenure: Freehold

Summary

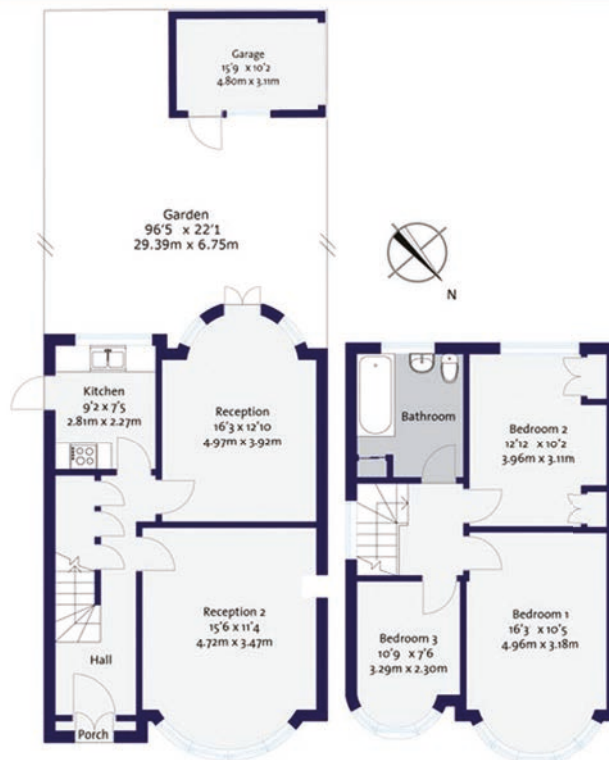
Green Dragon Lane is an ideal location for easy access to Grange Park's Network Rail Station, local shopping facilities and some excellent primary & secondary schools.

A sunny kitchen, double glazing through out, a south facing garden with side access to the front of the property and a garage to the rear complete this home.

This lovely home benefits from two reception rooms, both with bay windows; the rear reception offers French doors leading onto the attractive landscaped garden. On the first floor the house boasts three good sized bedrooms and a family bathroom.

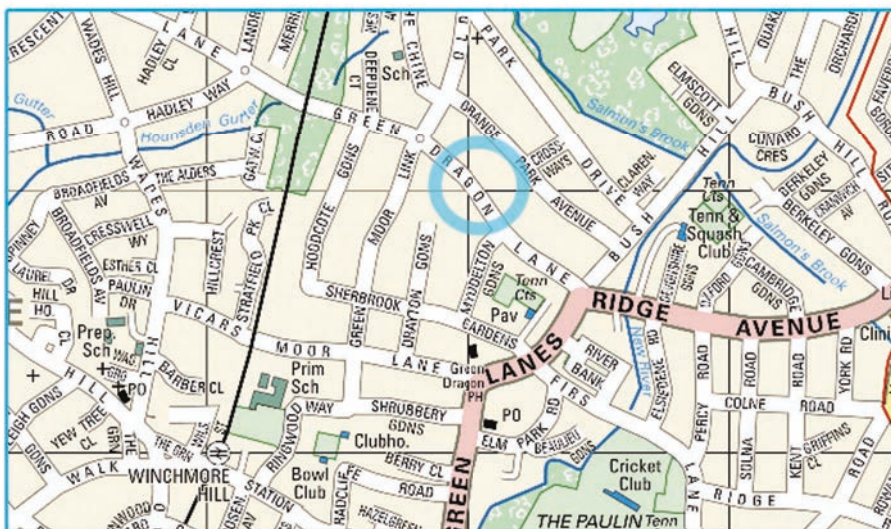
Offering potential of extend subject to the usual planning consents this property is being offered for sale on a chain free basis.

Floor Plans

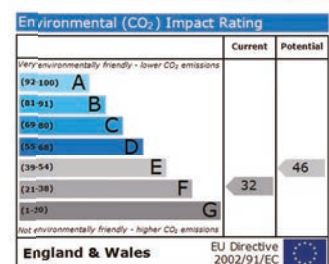
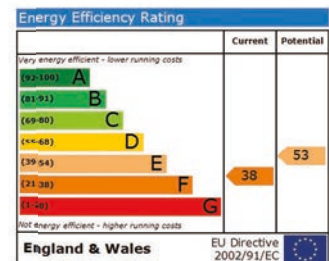


Gross Internal Area 1001 sq ft | 93 sq metres

Location Map



Energy Efficiency Rating Charts



The agent has not tested any apparatus, equipment, fixtures, fittings or services and so cannot verify that they are in working order or fit for their purpose. The buyer is advised to obtain verification from their solicitor or surveyor. All measurements and descriptions are approximate. The floor plan shown is for illustrative purposes only and should not be scaled from.